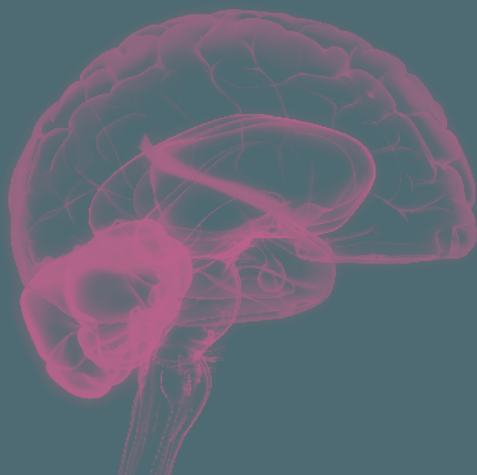

The Parkinson's Disease Foundation and
the Michigan Parkinson Foundation present

Mind, Mood and Body: Understanding Nonmotor Symptoms of PD

The second in a series of four educational
symposia and webcasts, *Parkinson's Science:
Innovations and New Perspectives*.



Friday, July 18, 2008

|

Lansing, MI

Dear Friends and Colleagues:

On behalf of the Parkinson's Disease Foundation (PDF) and the Michigan Parkinson Foundation (MPF), we welcome you to "Mind, Mood and Body: Understanding Nonmotor Symptoms of PD," the second installation of a series of four educational symposia and webcasts entitled, *Parkinson's Science: Innovations and New Perspectives*.

This event is intended to provide you with the most up-to-date information about Parkinson's disease (PD), presented by leading experts in the field. We are pleased that we will be joined at the symposium by a knowledgeable group of researchers and movement disorder specialists: Dr. Doree Ann V. Espiritu, Dr. Edwin B. George, Dr. John L. Goudreau, Dr. Peter A. LeWitt, Dr. Matthew Menza and Dr. Ronald F. Pfeiffer.

This team will be addressing a topic that is increasingly recognized as vital to understanding, living with and treating Parkinson's disease — nonmotor symptoms. We look forward to hearing valuable insights on how people with PD can better manage these symptoms.

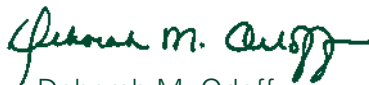
We encourage your participation in what we hope is not only an informative day, but also an interactive one — between PDF and MPF, between researchers and clinicians, and between you, our participants, and those who are at the forefront of treating and finding the cure for PD. Our hope is that you leave this event knowing more about PD and ways to improve your life with it.

Please also remember that this entire event will be available on the web for twelve months for you to revisit at your own convenience. You can find this information on both of our respective websites.

Thank you for joining us.



Robin Anthony Elliott
Executive Director
*Parkinson's Disease
Foundation (PDF)*



Deborah M. Orloff
Chief Executive Officer
*Michigan Parkinson
Foundation (MPF)*

PROGRAM



MIND, MOOD AND BODY: UNDERSTANDING NONMOTOR SYMPTOMS OF PD

9:55 AM – 10:00 AM	Opening Remarks
10:00 AM – 11:00 AM	When Parkinson's Interferes with Gastrointestinal, Urological, Sexual and Other Functions Ronald F. Pfeiffer, M.D. <i>University of Tennessee Health Science Center</i>
11:00 AM – 11:15 PM	Break
11:15 AM – 12:15 PM	Emotional and Cognitive Aspects of Parkinson's Disease Matthew Menza, M.D. <i>Robert Wood Johnson Medical School</i>
12:15 PM – 1:15 PM	LUNCH
1:15 PM – 2:55 PM	Additional Reflections on What We Know About the Nonmotor Symptoms of PD <i>Overview:</i> Peter A. LeWitt, M.D. <i>Henry Ford Hospital</i> <i>Panel Discussion:</i> Doree Ann V. Espiritu, M.D. <i>Henry Ford Hospital</i> Edwin B. George, M.D., Ph.D. <i>Wayne State University School of Medicine</i> John L. Goudreau, D.O., Ph.D. <i>Michigan State University</i> Matthew Menza, M.D. <i>Robert Wood Johnson Medical School</i> Ronald F. Pfeiffer, M.D. <i>University of Tennessee Health Science Center</i>
2:55 PM – 3:00 PM	Closing Remarks

Included in your symposium packet is an evaluation form for today's presentations. We ask that you fill it out and drop it off at the registration desk. Thank you for your input, which will be used by PDF and MPF to plan future educational programs.



PETER A. LEWITT, M.D.

Peter A. LeWitt, M.D., is Professor of Neurology at Wayne State University School of Medicine. Dr. LeWitt directs the Parkinson's Disease and Movement Disorder Program at Henry Ford Health Systems and a laboratory research program investigating the mechanisms of neurological disease and early diagnostic markers. He serves on the medical staff of Henry Ford Hospital.

Dr. LeWitt's research interests include neuroprotection and pharmacological management of Parkinson's disease and Alzheimer's disease and of other neurodegenerative conditions and movement disorders. He has been active in clinical trials of new medications for Parkinson's and Alzheimer's. He is a steering committee member and investigator for clinical trials conducted by the Parkinson Study Group and a participant in a National Institutes of Health (NIH) research consortium on neuroprotection in Parkinson's.

Dr. LeWitt is President of the Michigan Parkinson Foundation and President of the International Essential Tremor Foundation and has directed the National Parkinson Foundation's Center of Excellence in Southfield, Michigan. He has served as an educator for the American Academy of Neurology and The *Movement* Disorder Society, where he also serves as Secretary. He has been a scientific review consultant for the NIH, the Veterans Administration, and the Michael J. Fox Foundation for Parkinson's Research. Dr. LeWitt has also served as a consultant to many US and international pharmaceutical firms with respect to drug development and clinical trials in neurological disorders.

He is the author of more than 300 publications on clinical and basic neuroscience and in 1999 edited, Parkinson's Disease: The Treatment Options. He also serves as Editor-in-Chief of *Clinical Neuropharmacology* and is a member of the editorial board of *Journal of Neural Transmission*. Since 1994, he has been listed in "The Best Doctors in America."

Dr. Lewitt is a Board-certified neurologist sub-specializing in movement disorders. He received his undergraduate and research training and medical degrees from Brown University and received additional post-graduate medical and research training from the University of Pennsylvania School of Medicine, Stanford University School of Medicine and the NIH.



MATTHEW MENZA, M.D.

Matthew Menza, M.D., is Professor of Psychiatry and Neurology and the Interim Chair of the Department of Psychiatry at the Robert Wood Johnson Medical School.

Dr. Menza has been researching the psychiatric aspects of Parkinson's disease (PD) for many years. He is widely regarded for his work on the nonmotor aspects of PD and has served on many National Institutes of Health (NIH) committees and study sections. He was the lead researcher on the NIH-sponsored trial of depression in people with PD, which was just completed. He is also the lead researcher on the first multi-center, controlled trial of insomnia in PD.

Dr. Menza is also an active researcher in general psychopharmacology. He conducts clinical psychopharmacology trials focused on anxiety, depression and sleep.

He has written over 90 journal articles and book chapters. He co-edited, with Laura Marsh, M.D., of Johns Hopkins Medical School, a book on the nonmotor aspects of PD, entitled, Psychiatric Issues in Parkinson's Disease: Practical Management. Dr. Menza is listed in *Who's Who in America* and both the *Castle Connolly Guide* to the "Top Doctors in the New York Metro Area," and *New Jersey Monthly* "Top Doctors in New Jersey."

Dr. Menza received his medical degree from Temple University School of Medicine and performed his internship and residency in Psychiatry at the New York University Bellevue Medical Center. He also performed a fellowship in Psychosomatic Medicine at Massachusetts General Hospital, Harvard Medical School.



RONALD F. PFEIFFER, M.D.

Ronald F. Pfeiffer, M.D., is Professor and Vice Chair of the Department of Neurology at the University of Tennessee Health Science Center. He joined the University of Tennessee in 1994 after spending many years on the faculty of the University of Nebraska Medical Center.

Dr. Pfeiffer's area of specialization and research is Parkinson's disease. He has extensive experience in clinical trials of experimental medications for the treatment of Parkinson's disease and has a particular interest in gastrointestinal dysfunction in Parkinson's.

Dr. Pfeiffer is a member of the Parkinson Study Group, the current Chairman of the Continuing Medical Education Committee of The *Movement* Disorder Society and a member of the Research Committee on Parkinsonism and Related Disorders of the World Federation of Neurology. He has been author or co-author of approximately 190 journal articles or book chapters and is co-editor of three books.

He received an honorary Doctor of Laws degree from Concordia University, Nebraska in 2001 and is currently a member of their Board of Regents as well as the Board of Directors of the Concordia University Foundation. He is also a member of the Board of Directors of Wheat Ridge Ministries.

Dr. Pfeiffer received a Bachelor of Science degree from the University of Nebraska-Lincoln. He attended medical school at the University of Nebraska Medical Center and completed his internship and neurology residency training at Walter Reed Army Medical Center in Washington, DC.

FACULTY



DOREE ANN V. ESPIRITU, M.D.

Doree Ann V. Espiritu, M.D., is currently the Service Chief of Psychiatry of the Behavioral Health Services of the Henry Ford West Bloomfield Hospital.

Dr. Espiritu maintains an active practice seeing adult and geriatric patients in both outpatient and long-term care settings. She is a member of the Professional Advisory Board of the Michigan Parkinson Foundation and is also a member of the Area Agency on Aging State Advisory Council. Her special interests include issues in geriatric psychiatry, successful aging, wellness, spirituality in psychiatry and women's health.

She is certified in both Adult and Geriatric Psychiatry. She completed her psychiatry residency in Adult Psychiatry at the Henry Ford Health System and then went on to complete a fellowship in Geriatric Psychiatry at Wayne State University.



EDWIN B. GEORGE, M.D., PH.D.

Edwin B. George, M.D., Ph.D., is Assistant Professor of Neurology at Wayne State University School of Medicine, where he is Director of the Movement Disorders Center at the University Health Center. He is also Director of the Movement Disorders Clinic at the John D. Dingell Veteran's Affairs Medical Center.

Dr. George's research interests include clinical management of Parkinson's disease, tremor and dystonia, and he has been active in clinical trials of new medications for Parkinson's disease and dystonia. He has authored more than 45 published reports and book chapters, and has served as a consultant to US and international pharmaceutical firms.

Dr. George is Chairman of the Professional Advisory Board of the Michigan Parkinson Foundation and serves on the Movement Disorders Strategic Planning Committee of the American Academy of Neurology.

Dr. George received his M.D. and Ph.D. in Pharmacology from Case Western Reserve University and performed his residency training in Neurology at the Johns Hopkins Hospital.

FACULTY



JOHN L. GOUDREAU, D.O., PH.D.

John L. Goudreau, D.O., Ph.D., is an Associate Professor in the Departments of Neurology and Ophthalmology, and Pharmacology and Toxicology and in the Neuroscience Program at Michigan State University (MSU). He is also the Director of the Translational Neurobiology Research Unit at MSU. The goal of Dr. Goudreau's research program is to develop effective neuroprotective therapies for people living with Parkinson's disease.

Dr. Goudreau serves on the Professional Advisory Board of the Michigan Parkinson Foundation and is an active member of the Parkinson Study Group, the American Academy of Neurology, The *Movement* Disorder Society, the American Society for Pharmacology and Experimental Therapeutics, and the Society for Neuroscience.

Dr. Goudreau is Board-certified in Neurology, and received his medical degree and doctorate in Neuropharmacology at Michigan State University College of Osteopathic Medicine. He completed his residency in Neurology and a Movement Disorders Fellowship at the Mayo Clinic in Rochester, MN.

"I was never afraid," says 56 year old Vincent. "I lived my life unafraid. I worked a full time job, kept up with my wife, my kids and my grandkids until one day, I could not keep up and went to the doctor. After receiving the diagnosis of Parkinson's disease... I am always afraid."

Vincent is not alone.

He is one of the estimated 35,000 Michigan residents currently living with Parkinson's disease.

The Michigan Parkinson Foundation provides over 50 statewide support groups; information and referral line; the *Messenger* newsletter; adult day care and medication assistance; education for people with PD, families and health professionals and more.



 M I C H I G A N
arkinson Foundation

800-852-9781 . www.parkinsonsmi.org

PDtrials

You can play a part in moving
Parkinson's research forward

Browse Clinical Trials

All Trials:

View all posted clinical trials.

By Location:

Locate clinical trials in your area.

By Trial Type:

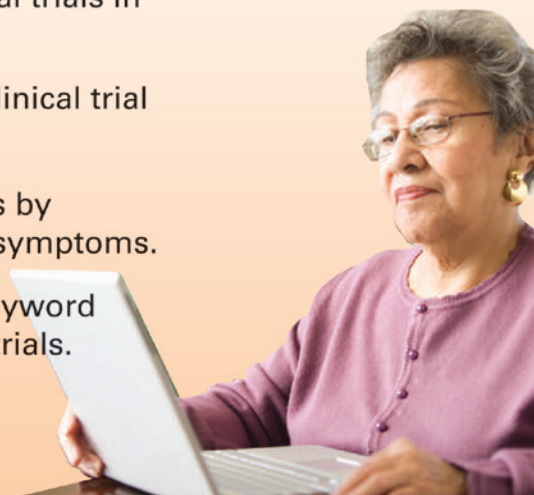
Browse by clinical trial objectives.

By Symptom:

Browse trials by Parkinson's symptoms.

By Keyword:

Search by keyword to help find trials.



PDtrials is led by



in collaboration with



and advised by



Parkinson Pipeline Project



WAS TODAY'S SYMPOSIUM INFORMATIVE? LEARN MORE!

YOU ARE INVITED TO:

Promoting Optimal Health in Persons with **Parkinson's Disease**

THE FOURTH MICHIGAN PARKINSON INITIATIVE SYMPOSIUM
Friday, September 12, 2008, The Inn at St. John's, Plymouth, MI

This educational symposium offers one track for people with Parkinson's and their families and another for healthcare professionals. Continuing Medical Education (CME) units are available.

For more information, contact the Michigan Parkinson Foundation at (800) 852-9781, mpfdi@aol.com or visit www.parkinsonsmi.org.



The Michigan Parkinson Initiative (MPI) is a collaborative effort by the Neurology Departments at the University of Michigan, Michigan State University and Wayne State University Medical Schools; Henry Ford Health System, St. John Health System, William Beaumont Hospital and the Michigan Parkinson Foundation.

PINS: The One-Stop Shop for Information on Parkinson's!



Questions about Parkinson's disease?

Find answers today! Visit PINS (*the Parkinson's Information Service*):

- Call our toll-free helpline, (800) 457-6676, from 9 AM – 6 PM ET.
- Submit a question to our "Ask the Expert" online service or view those frequently asked by others.
- Visit www.pdf.org to download PDF publications and order print copies.
- ¿Tiene preguntas sobre la enfermedad de Parkinson? Los expertos pueden ayudarle! Visite www.pdf.org, presente sus preguntas, y un especialista le responderá en un plazo de 8 – 10 días.

PDWEBCAST

We invite you to join us for the next two symposia in this series. Not in your neighborhood?

No problem. Not only are all four symposia live events, but they are also available on the web – live and after the event for one year!

Visit www.pdf.org to watch!

What's in the PD Pipeline?

Friday, May 9, 2008 in Charlotte, NC

With the Parkinson Association of the Carolinas

Mind, Mood and Body:

Understanding Nonmotor Symptoms of PD

Friday, July 18, 2008 in Lansing, MI

With the Michigan Parkinson Foundation

Surgical Advances, DBS and Parkinson's Disease

Saturday, October 11, 2008 in Spokane, WA

With the Northwest Parkinson's Foundation

Quality of Life and Parkinson's Disease

Saturday, April 4, 2009 in Houston, TX

With the Houston Area Parkinson Society

The content and management of these symposia and webcasts are under the exclusive direction of the Parkinson's Disease Foundation, the Parkinson Association of the Carolinas, the Michigan Parkinson Foundation, the Northwest Parkinson's Foundation and the Houston Area Parkinson Society and are made possible by a generous unrestricted grant from UCB, Inc.



The Parkinson's Disease Foundation® (PDF®) is a leading national presence in Parkinson's disease research, education and public advocacy. We are working for the nearly one million people in the US who live with Parkinson's by funding promising scientific research and supporting people with Parkinson's, their families and caregivers through educational programs and support services. Since its founding in 1957, PDF has funded over \$70 million worth of scientific research in Parkinson's disease, supporting the work of leading scientists throughout the world.

(800) 457-6676 | info@pdf.org | www.pdf.org



The Michigan Parkinson Foundation (MPF) works to: educate and provide support to people with Parkinson's and related disorders, their loved ones and care partners, and the physicians and allied health professionals who diagnose and treat those affected by the illness; support research into the mechanisms underlying the disease and therapeutic strategies aimed at reducing the burden of illness; and engage and enlist the support of institutions and individuals whose activities impact the needs of people with Parkinson's. MPF believes that no person with Parkinson's should be without responsive, quality care and support.

(800) 852-9781 | mpfdir@aol.com | www.parkinsonsmi.org